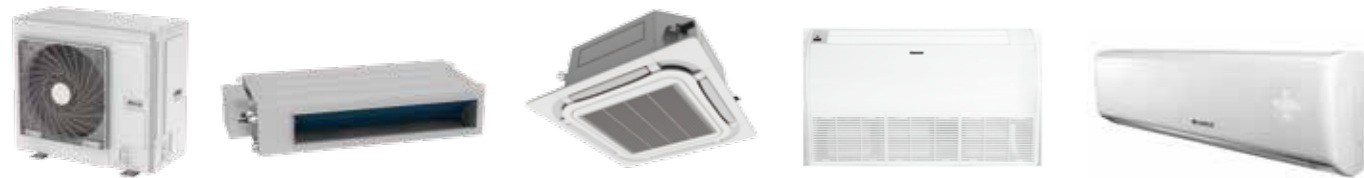




U-Match

It is a kind of split system that the outdoor unit can be freely connected to different types of indoor units according to various indoor decoration requirements.



- Adopt eco-friendly refrigerant R32. GWP of R32 is 68% lower than that of R410A, and charging quantity is reduced by 30% compared to R410A.
- High energy efficiency. SEER in cooling is up to 7.2, and SCOP in heating is up to 4.0. Power consumption in standby status is only 1W.
- Wide operation range. Cooling operation range is from -20°C(DB)~48°C(DB), and heating operation range is from -20°C(DB)~24°C(DB).
- Smart control including APP control, long-distance control and centralized control.
- Dual unit backup function. If one unit breaks down, the backup unit can start operation at once; if one unit cannot afford the demand, the backup unit can start working to supplement the output.



Indoor Unit

Duct type

- DC motor, energy-saving and high efficiency.
- Fresh air unit can be connected.
- Lift of water pump is 1000mm.
- Energy efficiency can be up A++ in cooling season and A+ in heating season.

Cassette type

- 360° air discharge for balance room temperature.
- DC motor and DC water pump, energy-saving and high efficiency.
- Fresh air unit can be connected.
- Lift of water pump is 1000mm.
- Energy efficiency can be up A++ in cooling season and A+ in heating season.

Floor ceiling type

- DC motor, energy-saving and high efficiency.
- Fresh air unit can be connected.
- Lift of water pump is 1000mm.
- Energy efficiency can be up A++ in cooling season and A+ in heating season.

Wall-mounted

- DC motor, energy-saving and high efficiency.
- Energy efficiency can be up A++ in cooling season and A+ in heating season.

Item	Nominal operating condition (temperature)				Operating range (temperature)			
	Outdoor condition		Indoor condition		Outdoor condition		Indoor condition	
	DB(°C)	WB(°C)	DB(°C)	WB(°C)	DB(°C)	DB(°C)	WB(°C)	
Cooling	35	24	27	19	-20 ~ 48	32	23	
Heating	7	6	20	15	-20 ~ 24	27	-	

Indoor Units Lineup

Capacity Index (kW)		3.5	5	7.1	8.5	
Outdoor Unit	Model	GUD35W/NhA-T	GUD50W/NhA-T	GUD71W/NhA-T	GUD85W/NhA-T	
	Picture					
Indoor Unit	Duct	Model	GUD35P/A-T (GUD35PS/A-T)	GUD50P/A-T (GUD50PS/A-T)	GUD71P/A-T (GUD71PS/A-T)	GUD85P/A-T (GUD85PS/A-T)
		Picture				
	Cassette	Model	GUD35T/A-T	GUD50T/A-T	GUD71T/A-T	GUD85T/A-T
		Picture				
	Floor ceiling	Model	GUD35ZD/A-T	GUD50ZD/A-T	GUD71ZD/A-T	GUD85ZD/A-T
		Picture				
Wall-mounted	Model	-	-	GUD71G/A-T	GUD100G/A-T	
	Picture	-	-			
Floor standing	Model	-	-	GUD71L/A-T	-	
	Picture	-	-		-	

Capacity Index (kW)		10	12.5	14	16	
Outdoor Unit	Model	GUD100W/NhA-T (GUD100W/NhA-X)	GUD125W/NhA-T (GUD125W/NhA-X)	GUD140W/NhA-T (GUD140W/NhA-X)	GUD160W/NhA-X	
	Picture					
Indoor Unit	Duct	Model	GUD100PH/A-T (GUD100PHS/A-T)	GUD125PH/A-T (GUD125PHS/A-T)	GUD140PH/A-T (GUD140PHS/A-T)	GUD160PH/A-T (GUD160PHS/A-T)
		Picture				
	Cassette	Model	GUD100T/A-T	GUD125T/A-T	GUD140T/A-T	GUD160T/A-T
		Picture				
	Floor ceiling	Model	GUD100ZD/A-T	GUD125ZD/A-T	GUD140ZD/A-T	GUD160ZD/A-T
		Picture				
Floor standing	Model	GUD100L/A-T	GUD125L/A-T	GUD140L/A-T	-	
	Picture	-		-	-	

Model	Outdoor Unit			GUD35W/NhA-T			
	Indoor Unit		Duct		Cassette	Floor Ceiling	
				GUD35P/A-T	GUD35PS/A-T	GUD35T/A-T	GUD35ZD/A-T
Capacity	Cooling	kW	3.50	3.50	3.50	3.50	3.50
		Btu/h	11900	11900	11900	11900	11900
	Heating	kW	4.00	4.00	4.00	4.00	4.00
		Btu/h	13600	13600	13600	13600	13600
SEER/SCOP			6.1/4.0	6.1/4.0	5.9/4.0	6.7/4.0	6.7/4.0
Energy efficiency grade (Cooling/Heating)			A++/A+	A++/A+	A+/A+	A++/A+	A++/A+
Power supply	V-Hz-Ph		220-240/208-230-50/60-1	220-240/208-230-50/60-1	220-240/208-230-50/60-1	220-240/208-230-50/60-1	220-240/208-230-50/60-1
Power input	Cooling	kW	0.95	0.95	1.00	0.90	0.90
	Heating	kW	1.05	1.05	1.05	0.95	0.95
Current input	Cooling	A	4.18	4.18	4.50	4.00	4.00
	Heating	A	4.70	4.70	4.70	4.20	4.20
Refrigerant charge volume			kg	0.78	0.78	0.78	0.78
Loading quantity	40'GP/40'HQ		set	141/158	141/158	130/162	114/132
Indoor unit	Air flow volume(SH/H/M/L)		CFM	383/353/300/265	383/353/300/265	382/341/282/235	383/359/312/271
			m³/h	650/600/510/450	650/600/510/450	650/580/480/400	650/610/530/460
	ESP	Rated	Pa	25	25	0	-
		Range	Pa	0-50	0-50	0	-
	Sound pressure level(SH/H/M/L)		dB(A)	41/38/36/34	41/38/36/34	41/39/36/33	39/36/32/28
	Dimension (WxDxH)	Outline	mm	700×450×200	700×450×200	570×570×265	870×665×235
		Package	mm	1008×568×275	1008×568×275	698×653×295	1033×770×300
	Net weight/Gross weight		kg	19.0/23.0	20.0/24.0	17.0/22.0	25.0/30.0
Panel	Dimension (WxDxH)	Outline	mm	-	-	620×620×47.5	-
		Package	mm	-	-	701×701×125	-
	Net weight/Gross weight	kg	-	-	3.0/4.5	-	
Outdoor unit	Sound pressure level		dB(A)	50/-/-	50/-/-	50/-/-	50/-/-
	Dimension (WxDxH)	Outline	mm	818×302×596	818×302×596	818×302×596	818×302×596
		Package	mm	948×420×645	948×420×645	948×420×645	948×420×645
Net weight/Gross weight		kg	37.0/40.0	37.0/40.0	37.0/40.0	37.0/40.0	
Connecting pipe	Outdoor diameter	Liquid	inch	1/4"	1/4"	1/4"	1/4"
		Gas	inch	3/8"	3/8"	3/8"	3/8"
	Max. distance	Height/Length	m	15/30	15/30	15/30	15/30

Model	Outdoor Unit			GUD50W/NhA-T			
	Indoor Unit		Duct		Cassette	Floor Ceiling	
				GUD50P/A-T	GUD50PS/A-T	GUD50T/A-T	GUD50ZD/A-T
Capacity	Cooling	kW	5.00	5.00	5.00	5.00	5.00
		Btu/h	17000	17000	17000	17000	17000
	Heating	kW	5.50	5.50	5.50	5.50	5.50
		Btu/h	18700	18700	18700	18700	18700
SEER/SCOP			6.1/4.0	6.1/4.0	5.9/4.0	6.1/4.0	6.1/4.0
Energy efficiency grade (Cooling/Heating)			A++/A+	A++/A+	A+/A+	A++/A+	A++/A+
Power supply	V-Hz-Ph		220-240/208-230-50/60-1	220-240/208-230-50/60-1	220-240/208-230-50/60-1	220-240/208-230-50/60-1	220-240/208-230-50/60-1
Power input	Cooling	kW	1.55	1.55	1.56	1.55	1.55
	Heating	kW	1.45	1.45	1.65	1.60	1.60
Current input	Cooling	A	6.30	6.30	6.83	6.50	6.50
	Heating	A	6.00	6.00	7.24	6.90	6.90
Refrigerant charge volume			kg	1.00	1.00	1	1.00
Loading quantity	40'GP/40'HQ		set	124/142	124/142	130/162	114/132
Indoor unit	Air flow volume(SH/H/M/L)		CFM	559/518/483/412	559/518/483/412	412/341/282/235	500/471/412/353
			m³/h	950/880/820/700	950/880/820/700	700/580/480/400	850/800/700/600
	ESP	Rated	Pa	25	25	-	-
		Range	Pa	0-50	0-50	-	-
	Sound pressure level(SH/H/M/L)		dB(A)	43/42/39/36	43/42/39/36	44/39/36/33	44/42/39/36
	Dimension (WxDxH)	Outline	mm	1000×450×200	1000×450×200	570×570×265	870×665×235
		Package	mm	1308×568×275	1308×568×275	698×653×295	1033×770×300
	Net weight/Gross weight		kg	25.0/30.0	26.0/31.0	17.0/22.0	26.0/31.0
Panel	Dimension (WxDxH)	Outline	mm	-	-	620×620×47.5	-
		Package	mm	-	-	701×701×125	-
	Net weight/Gross weight	kg	-	-	3.0/4.5	-	
Outdoor unit	Sound pressure level		dB(A)	53/-/-	53/-/-	53/-/-	53/-/-
	Dimension (WxDxH)	Outline	mm	818×302×596	818×302×596	818×302×596	818×302×596
		Package	mm	948×420×645	948×420×645	948×420×645	948×420×645
Net weight/Gross weight		kg	39.0/42.0	39.0/42.0	39.0/42.0	39.0/42.0	
Connecting pipe	Outdoor diameter	Liquid	inch	1/4"	1/4"	1/4"	1/4"
		Gas	inch	1/2"	1/2"	1/2"	1/2"
	Max. distance	Height/Length	m	20/35	20/35	20/35	20/35

Model	Outdoor Unit			GUD71W/NhA-T					
	Indoor Unit		Duct		Cassette	Floor Ceiling	Wall-mounted	Floor Standing	
				GUD71P/A-T	GUD71PS/A-T	GUD71T/A-T	GUD71ZD/A-T	GUD71G/A-T	GUD71L/A-T
Capacity	Cooling	kW	7.00	7.00	7.00	7.00	7.00	6.5	7
		Btu/h	23800	23800	23800	23800	23800	22000	24000
	Heating	kW	8.00	8.00	8.00	8.00	8.00	7.5	8
		Btu/h	27200	27200	27200	27200	27200	25600	27000
SEER/SCOP			6.8/4.0	6.8/4.0	7.2/3.9	6.8/3.9	6.1/4.1	6.1/4.0	
Energy efficiency grade (Cooling/Heating)			A++/A+	A++/A+	A++/A	A++/A	A++/A+	A++/A+	
Power supply	V-Hz-Ph		220-240/208-230-50/60-1	220-240/208-230-50/60-1	220-240/208-230-50/60-1	220-240/208-230-50/60-1	220-240/208-230-50/60-1	220-240/208-230-50/60-1	220-240/208-230-50/60-1
Power input	Cooling	kW	2.10	2.10	2.05	2.10	2.1	2.1	2.1
	Heating	kW	2.25	2.25	2.20	2.45	2.25	2.25	2.25
Current input	Cooling	A	8.70	8.70	8.8	8.60	8.7	8.7	8.7
	Heating	A	9.50	9.50	9.5	10.50	9.5	9.5	9.5
Refrigerant charge volume			kg	1.60	1.60	1.6	1.60	1.6	1.6
Loading quantity	40'GP/40'HQ		set	84/102	84/102	79/91	90/97	118/131	47/47
Indoor unit	Air flow volume(SH/H/M/L)		CFM	706/682/641/553	706/682/641/553	647/618/565/512	765/718/641/553	735	647
			m³/h	1200/1160/1090/940	1200/1160/1090/940	1100/1050/960/870	1300/1220/1090/940	1250	1100
	ESP	Rated	Pa	25	25	-	-	0	0
		Range	Pa	0-75	0-75	-	-	0	0
	Sound pressure level(SH/H/M/L)		dB(A)	40/39/37/36	40/39/37/36	43/42/40/39	45/44/41/38	44	54
	Dimension (WxDxH)	Outline	mm	1300×450×220	1300×450×220	840×840×240	1200×665×235	1078×246×325	1870×580×395
		Package	mm	1628×578×300	1628×578×300	963×963×325	1363×770×300	1148×413×350	2153×738×545
	Net weight/Gross weight		kg	30.0/37.0	31.0/38.0	29.0/36.0	31.0/37.0	16/20	56/63
Panel	Dimension (WxDxH)	Outline	mm	-	-	950×950×52	-	-	
		Package	mm	-	-	1033×1038×112	-	-	
	Net weight/Gross weight	kg	-	-	6.0/9.5	-	-		
Outdoor unit	Sound pressure level		dB(A)	52/-/-	52/-/-	52/-/-	52/-/-	52	52
	Dimension (WxDxH)	Outline	mm	892×340×698	892×340×698	892×340×698	892×340×698	892×340×698	892×340×698
		Package	mm	1029×458×750	1029×458×750	1029×458×750	1029×458×750	1029×458×750	1029×458×750
Net weight/Gross weight		kg	53.0/57.0	53.0/57.0	53.0/57.0	53.0/57.0	53/57	53/57	
Connecting pipe	Outdoor diameter	Liquid	inch	3/8"	3/8"	3/8"	3/8"	3/8	3/8
		Gas	inch	5/8"	5/8"	5/8"	5/8"	5/8	5/8
	Max. distance	Height/Length	m	25/50	25/50	25/50	25/50	50/75	25/50

Model	Outdoor Unit			GUD85W/NhA-T			
	Indoor Unit		Duct		Cassette	Floor Ceiling	
				GUD85P/A-T	GUD85PS/A-T	GUD85T/A-T	GUD85ZD/A-T
Capacity	Cooling	kW	8.50	8.50	8.50	8.50	8.50
		Btu/h	29000	29000	29000	29000	29000
	Heating	kW	8.80	8.80	8.80	8.80	8.80
		Btu/h	30000	30000	30000	30000	30000
SEER/SCOP			6.1/4.0	6.1/4.0	6.1/4.0	6.1/4.0	6.1/4.0
Energy efficiency grade (Cooling/Heating)			A++/A+	A++/A+	A++/A+	A++/A+	A++/A+
Power supply	V-Hz-Ph		220-240/208-230-50/60-1	220-240/208-230-50/60-1	220-240/208-230-50/60-1	220-240/208-230-50/60-1	220-240/208-230-50/60-1
Power input	Cooling	kW	2.70	2.70	2.70	2.80	2.80
	Heating	kW	2.55	2.55	2.65	2.65	2.65
Current input	Cooling	A	12.10	12.10	12.7	12.70	12.70
	Heating	A	11.10	11.10	11.7	11.70	11.70
Refrigerant charge volume			kg	1.80	1.80	1.8	1.80
Loading quantity	40'GP/40'HQ		set	76/89	76/89	66/82	74/86
Indoor unit	Air flow volume(SH/H/M/L)		CFM	883/794/665/559	883/794/665/559	824/771/694/612	883/812/706/600
			m³/h	1500/1350/1130/950	1500/1350/1130/950	1400/1310/1180/1040	1500/1380/1200/1020
	ESP	Rated	Pa	37	37	-	-
		Range	Pa	0-75	0-75	-	-
	Sound pressure level(SH/H/M/L)		dB(A)	42/40/37/35	42/40/37/35	49/47/44/41	49/47/43/39
	Dimension (WxDxH)	Outline	mm	1300×450×220	1300×450×220	840×840×240	1200×665×235
		Package	mm	1628×578×300	1628×578×300	963×963×325	1363×770×300
	Net weight/Gross weight		kg	30.0/37.0	31.0/38.0	29.0/36.0	31.0/37.0
Panel	Dimension (WxDxH)	Outline	mm	-	-	950×950×52	-
		Package	mm	-	-	1033×1038×112	-
	Net weight/Gross weight	kg	-	-	6.0/9.5	-	
Outdoor unit	Sound pressure level		dB(A)	53/-/-	53/-/-	53/-/-	53/-/-
	Dimension (WxDxH)	Outline	mm	920×370×790	920×370×790	920×370×790	920×370×790
		Package	mm	1083×488×855	1083×488×855	1083×488×855	1083×488×855
Net weight/Gross weight		kg	60.0/65.0	60.0/65.0	60.0/65.0	60.0/65.0	
Connecting pipe	Outdoor diameter	Liquid	inch	3/8"	3/8"	3/8"	3/8"
		Gas	inch	5/8"	5/8"	5/8"	5/8"
	Max. distance	Height/Length	m	25/50	25/50	25/50	25/50

Note*: This product model is under development. Gree reserves the right to modify the specifications without prior notice. Please confirm the final specifications with sales representatives.

Model	Outdoor Unit		GUD100W/NhA-T						
	Indoor Unit		Duct		Cassette	Floor Ceiling	Wall-mounted	Floor Standing	
			GUD100PH/A-T	GUD100PHS/A-T	GUD100T/A-T	GUD100ZD/A-T	GUD100G/A-T	GUD100LA-T	
Capacity	Cooling	kW	10.00	10.00	10.00	10.00	9.5	10	
		Btu/h	34100	34100	34100	34100	32000	34100	
	Heating	kW	12.00	12.00	12.00	12.00	10.5	12	
Btu/h		40900	40900	40900	40900	35800	41000		
SEER/SCOP			6.1/4.0	6.1/4.0	6.1/4.0	6.1/4.0	6.1/4.1	6.1/4.0	
Energy efficiency grade (Cooling/Heating)			A++/A+	A++/A+	A++/A+	A++/A+	A++/A+	A++/A+	
Power supply	V-Hz-Ph		220-240/208-230-50/60-1	220-240/208-230-50/60-1	220-240/208-230-50/60-1	220-240/208-230-50/60-1	220-240/208-230-50/60-1	220-240/208-230-50/60-1	
Power input	Cooling	kW	3.20	3.20	3.15	3.20	3.2	3.2	
	Heating	kW	3.40	3.40	3.55	3.60	3.4	3.4	
Current input	Cooling	A	13.90	13.90	13.8	14.50	12.1	13.9	
	Heating	A	15.20	15.20	15.7	15.90	9.5	15.2	
Refrigerant charge volume			2.50	2.50	2.50	2.50	2.50	2.50	
Loading quantity	40'GP/40'HQ		57/56	57/56	59/72	57/68	72/87	36/42	
Indoor unit	Air flow volume(SH/H/M/L)		CFM	1059/894/812/747	1059/894/812/747	883/865/812/718	942/883/794/742	941	970
			m³/h	1800/1520/1380/1270	1800/1520/1380/1270	1500/1470/1380/1220	1600/1500/1350/1260	1600	1650
	ESP	Rated	Pa	37	37	-	-	0	0
		Range	Pa	0-150	0-150	-	-	0	0
	Sound pressure level(SH/H/M/L)		dB(A)	46/44/42/40	46/44/42/40	50/48/46/42	49/47/45/43	50	56
	Dimension (WxDxH)	Outline	mm	1000×700×300	1000×700×300	840×840×240	1200×665×235	1350×253×326	1870×580×395
		Package	mm	1205×813×360	1205×813×360	963×963×325	1363×770×300	1441×421×367	2153×738×545
	Net weight/Gross weight		kg	40.0/46.0	41.0/47.0	31.0/38.0	32.0/38.0	19/24	56/63
	Panel	Dimension (WxDxH)	Outline	mm	-	-	950×950×52	-	-
Package			mm	-	-	1033×1038×112	-	-	-
Net weight/Gross weight		kg	-	-	6.0/9.5	-	-	-	
Outdoor unit	Sound pressure level		dB(A)	55/—/—	55/—/—	55/—/—	55/—/—	55	55
	Dimension (WxDxH)	Outline	mm	940×460×820	940×460×820	940×460×820	940×460×820	940*460*820	940*460*820
		Package	mm	1083×573×973	1083×573×973	1083×573×973	1083×573×973	1073*563*868	1073*563*868
	Net weight/Gross weight		kg	83/95	83/95	83.0/95.0	83.0/95.0	83/95	83/95
Connecting pipe	Outdoor diameter	Liquid	inch	3/8"	3/8"	3/8"	3/8"	3/8	3/8
		Gas	inch	5/8"	5/8"	5/8"	5/8"	5/8	5/8
	Max. distance	Height/Length	m	30/65	30/65	30/65	30/65	65/75	30/65

Model	Outdoor Unit		GUD125W/NhA-T						
	Indoor Unit		Duct		Cassette	Floor Ceiling	Floor Standing		
			GUD125PH/A-T	GUD125PHS/A-T	GUD125T/A-T	GUD125ZD/A-T	GUD125LA-T		
Capacity	Cooling	kW	12.10	12.10	12.10	12.10	12	12	
		Btu/h	41200	41200	41200	41200	41000	41000	
	Heating	kW	13.50	13.50	13.50	13.50	13.50	13.5	
Btu/h		46000	46000	46000	46000	46000	46000		
SEER/SCOP			5.8/3.8	5.8/3.8	5.8/3.8	5.8/3.8	5.8/3.8	6.1/4.0	
Energy efficiency grade (Cooling/Heating)			A+/A	A+/A	A++/A	A++/A	A++/A+	A++/A+	
Power supply	V-Hz-Ph		220-240/208-230-50/60-1	220-240/208-230-50/60-1	220-240/208-230-50/60-1	220-240/208-230-50/60-1	220-240/208-230-50/60-1	220-240/208-230-50/60-1	
Power input	Cooling	kW	4.10	4.10	4.10	4.10	3.90	4.10	
	Heating	kW	4.10	4.10	4.20	4.20	3.95	4.10	
Current input	Cooling	A	17.90	17.90	17.50	17.50	15.70	17.90	
	Heating	A	17.00	17.00	18	18	16.80	17	
Refrigerant charge volume			2.65	2.65	2.65	2.65	2.65	2.65	
Loading quantity	40'GP/40'HQ		47/53	47/53	56/56	54/62	36/42	36/42	
Indoor unit	Air flow volume(SH/H/M/L)		CFM	1177/1018/924/824	1177/1018/924/824	1059/995/865/742	1059/1000/906/824	970	970
			m³/h	2000/1730/1570/1400	2000/1730/1570/1400	1800/1690/1470/1260	1800/1700/1540/1400	1650	1650
	ESP	Rated	Pa	50	50	-	-	0	0
		Range	Pa	0-150	0-150	-	-	0	0
	Sound pressure level(SH/H/M/L)		dB(A)	42/40/39/37	42/40/39/37	51/49/46/42	49/47/44/42	56	56
	Dimension (WxDxH)	Outline	mm	1400×700×300	1400×700×300	840×840×290	1570×665×235	1870×580×395	
		Package	mm	1601×813×365	1601×813×365	963×963×379	1729×770×300	2153×738×545	
	Net weight/Gross weight		kg	49.0/55.0	50.0/56.0	33.0/41.0	40.0/47.0	59/66	
	Panel	Dimension (WxDxH)	Outline	mm	-	-	950×950×52	-	-
Package			mm	-	-	1033×1038×112	-	-	
Net weight/Gross weight		kg	-	-	6.0/9.5	-	-		
Outdoor unit	Sound pressure level		dB(A)	55/—/—	55/—/—	55/—/—	55/—/—	55	
	Dimension (WxDxH)	Outline	mm	940×460×820	940×460×820	940×460×820	940×460×820	940*460*820	
		Package	mm	1083×573×973	1083×573×973	1083×573×973	1083×573×973	1073*563*868	
	Net weight/Gross weight		kg	91/103	91/103	91.0/103.0	91.0/103.0	91/103	
Connecting pipe	Outdoor diameter	Liquid	inch	3/8"	3/8"	3/8"	3/8"	3/8	
		Gas	inch	5/8"	5/8"	5/8"	5/8"	5/8	
	Max. distance	Height/Length	m	30/75	30/75	30/75	30/75	30/75	

Model	Outdoor Unit		GUD100W/NhA-X				
	Indoor Unit		Duct		Cassette	Floor Ceiling	
			GUD100PH/A-T	GUD100PHS/A-T	GUD100T/A-T	GUD100ZD/A-T	
Capacity	Cooling	kW	10.00	10.00	10.00	10.00	
		Btu/h	34100	34100	34100	34100	
	Heating	kW	12.00	12.00	12.00	12.00	
Btu/h		40900	40900	40900	40900		
SEER/SCOP			6.1/4.0	6.1/4.0	6.1/4.0	6.1/4.0	
Energy efficiency grade (Cooling/Heating)			A++/A+	A++/A+	A++/A+	A++/A+	
Power supply	V-Hz-Ph		380-415-50/60-3	380-415-50/60-3	380-415-50/60-3	380-415-50/60-3	
Power input	Cooling	kW	3.15	3.15	3.00	3.30	
	Heating	kW	3.50	3.50	3.40	3.50	
Current input	Cooling	A	4.80	4.80	5.00	5.10	
	Heating	A	5.60	5.60	5.30	5.60	
Refrigerant charge volume			2.50	2.50	2.50	2.50	
Loading quantity	40'GP/40'HQ		57/56	57/56	59/72	57/68	
Indoor unit	Air flow volume(SH/H/M/L)		CFM	1059/894/812/747	1059/894/812/747	883/865/812/718	942/883/794/742
			m³/h	1800/1520/1380/1270	1800/1520/1380/1270	1500/1470/1380/1220	1600/1500/1350/1260
	ESP	Rated	Pa	37	37	-	-
		Range	Pa	0-150	0-150	-	-
	Sound pressure level(SH/H/M/L)		dB(A)	46/44/42/40	46/44/42/40	50/48/46/42	49/47/45/43
	Dimension (WxDxH)	Outline	mm	1000×700×300	1000×700×300	840×840×240	1200×665×235
		Package	mm	1205×813×360	1205×813×360	963×963×325	1363×770×300
	Net weight/Gross weight		kg	40.0/46.0	41.0/47.0	31.0/38.0	32.0/38.0
	Panel	Dimension (WxDxH)	Outline	mm	-	-	950×950×52
Package			mm	-	-	1033×1038×112	-
Net weight/Gross weight		kg	-	-	6.0/9.5	-	
Outdoor unit	Sound pressure level		dB(A)	55/—/—	55/—/—	55/—/—	55/—/—
	Dimension (WxDxH)	Outline	mm	940×460×820	940×460×820	940×460×820	940×460×820
		Package	mm	1083×573×973	1083×573×973	1083×573×973	1083×573×973
	Net weight/Gross weight		kg	89.0/101.0	89.0/101.0	89.0/101.0	89.0/101.0
Connecting pipe	Outdoor diameter	Liquid	inch	3/8"	3/8"	3/8"	3/8"
		Gas	inch	5/8"	5/8"	5/8"	5/8"
	Max. distance	Height/Length	m	30/65	30/65	30/65	30/65

Model	Outdoor Unit		GUD125W/NhA-X				
	Indoor Unit		Duct		Cassette	Floor Ceiling	
			GUD125PH/A-T	GUD125PHS/A-T	GUD125T/A-T	GUD125ZD/A-T	
Capacity	Cooling	kW	12.10	12.10	12.10	12.10	
		Btu/h	41200	41200	41200	41200	
	Heating	kW	13.50	13.50	13.50	13.50	
Btu/h		46000	46000	46000	46000		
SEER/SCOP			5.8/3.8	5.8/3.8	5.8/3.8	6.1/3.8	
Energy efficiency grade (Cooling/Heating)			A+/A	A+/A	A++/A	A++/A	
Power supply	V-Hz-Ph		380-415-50/60-3	380-415-50/60-3	380-415-50/60-3	380-415-50/60-3	
Power input	Cooling	kW	3.80	3.80	4.05	4.05	
	Heating	kW	3.90	3.90	4.15	4.00	
Current input	Cooling	A	5.30	5.30	5.90	5.90	
	Heating	A	5.50	5.50	6.10	6.10	
Refrigerant charge volume			2.65	2.65	2.65	2.65	
Loading quantity	40'GP/40'HQ		47/53	47/53	56/56	54/62	
Indoor unit	Air flow volume(SH/H/M/L)		CFM	1177/1018/924/824	1177/1018/924/824	1059/995/865/742	1059/1000/906/824
			m³/h	2000/1730/1570/1400	2000/1730/1570/1400	1800/1690/1470/1260	1800/1700/1540/1400
	ESP	Rated	Pa	50	50	-	-
		Range	Pa	0-150	0-150	-	-
	Sound pressure level(SH/H/M/L)		dB(A)	42/40/39/37	42/40/39/37	51/49/46/42	49/47/44/42
	Dimension (WxDxH)	Outline	mm	1400×700×300	1400×700×300	840×840×290	1570×665×235
		Package	mm	1601×813×365	1601×813×365	963×963×379	1729×770×300
	Net weight/Gross weight		kg	49.0/55.0	50.0/56.0	33.0/41.0	40.0/47.0
	Panel	Dimension (WxDxH)	Outline	mm	-	-	950×950×52
Package			mm	-	-	1033×1038×112	-
Net weight/Gross weight		kg	-	-	6.0/9.5	-	
Outdoor unit	Sound pressure level		dB(A)	56/—/—	56/—/—	56/—/—	56/—/—
	Dimension (WxDxH)	Outline	mm	940×460×820	940×460×820	940×460×820	940×460×820
		Package	mm	1083×573×973	1083×573×973	1083×573×973	1083×573×973
	Net weight/Gross weight		kg	95/107	95/107	95.0/107.0	95.0/107.0
Connecting pipe	Outdoor diameter	Liquid	inch	3/8"	3/8"	3/8"	3/8"
		Gas	inch	5/8"	5/8"	5/8"	5/8"
	Max. distance	Height/Length	m	30/75	30/75	30/75	30/75

Note*: This product model is under development. Gree reserves the right to modify the specifications without prior notice. Please confirm the final specifications with sales representatives.

Note*: This product model is under development. Gree reserves the right to modify the specifications without prior notice. Please confirm the final specifications with sales representatives.

Model	Outdoor Unit		GUD140W/NhA-T						
	Indoor Unit		Duct		Cassette	Floor Ceiling	Floor Standing		
			GUD140PH/A-T	GUD140PHS/A-T	GUD140T/A-T	GUD140ZD/A-T	GUD140L/A-T*		
Capacity	Cooling	kW	13.40	13.40	13.40	13.40	13.4		
		Btu/h	45700	45700	45700	45700	45700		
	Heating	kW	15.50	15.50	15.50	15.50	16		
		Btu/h	52800	52800	52800	52800	55000		
SEER/SCOP			-	6.1/3.6	6.1/3.6	6.1/3.6	6.1/4.0		
Energy efficiency grade (Cooling/Heating)			-	A++/A	A++/A	A++/A	A++/A+		
Power supply	V-Hz-Ph		220-240/208-230-50/60-1	220-240/208-230-50/60-1	220-240/208-230-50/60-1	220-240/208-230-50/60-1	220-240/208-230-50/60-1		
Power input	Cooling	kW	4.45	4.45	4.65	4.40	4.65		
	Heating	kW	4.60	4.60	4.35	4.35	4.35		
Current input	Cooling	A	19.90	19.90	20.8	19.50	19.5		
	Heating	A	20.40	20.40	19.5	19.40	19.4		
Refrigerant charge volume	kg		2.80	2.80	2.80	2.80	2.80		
Loading quantity	40'GP/40'HQ		set	47/53	47/53	56/56	54/62		
Indoor unit	Air flow volume(SH/H/M/L)		CFM	1295/1177/1018/877	1295/1177/1018/877	1118/995/871/671	1236/1177/1059/871	1058	
			m³/h	2200/2000/1730/1490	2200/2000/1730/1490	1900/1690/1480/1140	2100/2000/1800/1480	1800	
	ESP	Rated	Pa	50	50	-	-	0	
		Range	Pa	0-150	0-150	-	-	0	
	Sound pressure level(SH/H/M/L)		dB(A)	43/41/40/38	43/41/40/38	52/51/48/45	52/50/48/44	58	
	Dimension (WxDxH)	Outline	mm	1400×700×300	1400×700×300	840×840×290	1570×665×235	1870×580×395	
		Package	mm	1601×813×365	1601×813×365	963×963×379	1729×770×300	2153×738×545	
	Net weight/Gross weight		kg	49.0/55.0	50.0/56.0	36.0/44.0	42.0/49.0	59/66	
	Panel	Dimension (WxDxH)	Outline	mm	-	-	950×950×52	-	-
			Package	mm	-	-	1033×1038×112	-	-
Net weight/Gross weight		kg	-	-	6.0/9.5	-	-		
Outdoor unit	Sound pressure level		dB(A)	56/-/-	56/-/-	56/-/-	56/-/-	56	
	Dimension (WxDxH)	Outline	mm	940×460×820	940×460×820	940×460×820	940×460×820	940×460×820	
		Package	mm	1083×573×973	1083×573×973	1083×573×973	1083×573×973	1073×563×868	
Net weight/Gross weight		kg	95/107	95/107	95.0/107.0	95.0/107.0	95/107		
Connecting pipe	Outdoor diameter	Liquid	inch	3/8"	3/8"	3/8"	3/8"	3/8	
		Gas	inch	5/8"	5/8"	5/8"	5/8"	5/8	
	Max. distance	Height/Length	m	30/75	30/75	30/75	30/75	30/75	

Model	Outdoor Unit		GUD140W/NhA-X					
	Indoor Unit		Duct		Cassette	Floor Ceiling		
			GUD140PH/A-T	GUD140PHS/A-T	GUD140T/A-T	GUD140ZD/A-T		
Capacity	Cooling	kW	13.40	13.40	13.40	13.40		
		Btu/h	45700	45700	45700	45700		
	Heating	kW	15.50	15.50	15.50	15.50		
		Btu/h	52800	52800	52800	52800		
SEER/SCOP			-	5.6/3.7	5.6/3.7	6.1/4.0		
Energy efficiency grade (Cooling/Heating)			-	A+/A	A+/A	A++/A+		
Power supply	V-Hz-Ph		380-415-50/60-3	380-415-50/60-3	380-415-50/60-3	380-415-50/60-3		
Power input	Cooling	kW	4.70	4.70	4.70	4.30		
	Heating	kW	4.45	4.45	4.45	4.40		
Current input	Cooling	A	7.20	7.20	7.20	6.60		
	Heating	A	6.20	6.20	6.20	6.70		
Refrigerant charge volume	kg		2.80	2.80	2.80	2.80		
Loading quantity	40'GP/40'HQ		set	47/53	47/53	56/56		
Indoor unit	Air flow volume(SH/H/M/L)		CFM	1295/1177/1018/877	1295/1177/1018/877	1118/995/871/671	1236/1177/1059/871	
			m³/h	2200/2000/1730/1490	2200/2000/1730/1490	1900/1690/1480/1140	2100/2000/1800/1480	
	ESP	Rated	Pa	50	50	-	-	
		Range	Pa	0-150	0-150	-	-	
	Sound pressure level(SH/H/M/L)		dB(A)	43/41/40/38	43/41/40/38	52/51/48/45	52/50/48/44	
	Dimension (WxDxH)	Outline	mm	1400×700×300	1400×700×300	840×840×290	1570×665×235	
		Package	mm	1601×813×365	1601×813×365	963×963×379	1729×770×300	
	Net weight/Gross weight		kg	49.0/55.0	50.0/56.0	36.0/44.0	42.0/49.0	
	Panel	Dimension (WxDxH)	Outline	mm	-	-	950×950×52	-
			Package	mm	-	-	1033×1038×112	-
Net weight/Gross weight		kg	-	-	9.5	-		
Outdoor unit	Sound pressure level		dB(A)	57/-/-	57/-/-	57/-/-	57/-/-	
	Dimension (WxDxH)	Outline	mm	940×460×820	940×460×820	940×460×820	940×460×820	
		Package	mm	1083×573×973	1083×573×973	1083×573×973	1083×573×973	
Net weight/Gross weight		kg	99.0/111.0	99.0/111.0	99.0/111.0	99.0/111.0		
Connecting pipe	Outdoor diameter	Liquid	inch	3/8"	3/8"	3/8"	3/8"	
		Gas	inch	5/8"	5/8"	5/8"	5/8"	
	Max. distance	Height/Length	m	30/75	30/75	30/75	30/75	

Note*: This product model is under development. Gree reserves the right to modify the specifications without prior notice. Please confirm the final specifications with sales representatives.

Model	Outdoor Unit		GUD160W/NhA-X					
	Indoor Unit		Duct		Cassette	Floor Ceiling		
			GUD160PH/A-T	GUD160PHS/A-T	GUD160T/A-T	GUD160ZD/A-T		
Capacity	Cooling	kW	16.00	16.00	14.50	16.00		
		Btu/h	54500	54500	49400	54500		
	Heating	kW	17.00	17.00	17.00	17.00		
		Btu/h	58000	58000	58000	58000		
SEER/SCOP			-	6.1/3.8	6.1/3.8	6.1/4.0		
Energy efficiency grade (Cooling/Heating)			-	A++/A	A++/A	A++/A+		
Power supply	V-Hz-Ph		380-415-50/60-3	380-415-50/60-3	380-415-50/60-3	380-415-50/60-3		
Power input	Cooling	kW	5.45	5.45	5.20	5.40		
	Heating	kW	5.00	5.00	4.80	5.40		
Current input	Cooling	A	7.70	7.70	7.60	7.70		
	Heating	A	7.30	7.30	7.20	7.60		
Refrigerant charge volume	kg		3.60	3.60	3.60	3.60		
Loading quantity	40'GP/40'HQ		set	43/47	43/47	52/55		
Indoor unit	Air flow volume(SH/H/M/L)		CFM	1412/1153/983/812	1412/1153/983/812	1177/1106/953/842	1354/1295/1100/936	
			m³/h	2400/1960/1670/1380	2400/1960/1670/1380	2000/1880/1620/1430	2300/2200/1870/1590	
	ESP	Rated	Pa	50	50	-	-	
		Range	Pa	0-200	0-200	-	-	
	Sound pressure level(SH/H/M/L)		dB(A)	44/41/39/38	44/41/39/38	54/52/50/48	54/53/49/45	
	Dimension (WxDxH)	Outline	mm	1400×700×300	1400×700×300	840×840×290	1570×665×235	
		Package	mm	1678×808×365	1678×808×365	963×963×379	1729×770×300	
	Net weight/Gross weight		kg	56.0/63.0	57.0/64.0	36.0/44.0	42.0/49.0	
	Panel	Dimension (WxDxH)	Outline	mm	-	-	950×950×52	-
			Package	mm	-	-	1033×1038×112	-
Net weight/Gross weight		kg	-	-	9.5	-		
Outdoor unit	Sound pressure level		dB(A)	57/-/-	57/-/-	57/-/-	57/-/-	
	Dimension (WxDxH)	Outline	mm	900×340×1345	900×340×1345	900×340×1345	900×340×1345	
		Package	mm	1048×458×1500	1048×458×1500	1048×458×1500	1048×458×1500	
Net weight/Gross weight		kg	112.0/122.0	112.0/122.0	112.0/122.0	112.0/122.0		
Connecting pipe	Outdoor diameter	Liquid	inch	3/8"	3/8"	3/8"	3/8"	
		Gas	inch	5/8"	5/8"	5/8"	5/8"	
	Max. distance	Height/Length	m	30/75	30/75	30/75	30/75	

Control System Lineup

Controlling system	Product series	Image	High efficiency series		
			Duct type	Cassette type	Floor ceiling type
Wireless Remote Controller	YAP1F6				
	YAN1F1				
	YAA1FB6(WIFI)				
Wired Controller	XK117				
	XK75				
Smart zone controller	CE52-24/F(C)				
Modbus Gateway	ME50-00/EG(M)				
Dry Contact Gateway (Extended Function Board)	ME30-42/E1				
Optoelectronic Isolated Converter	RS232-RS422/485				
Wifi Module	ME31-00/C4				
Door Controller	MK03				

Note: ● means standard, ○ means optional.